

## Kleinburg P.S.

10391 Islington Ave.

Kleinburg, ON

L0J 1C0

Phone: 905-893-1142

Fax: 905-893-3500

[www.kleinburg.ps.yrdsb.ca](http://www.kleinburg.ps.yrdsb.ca)

Principal

Greg Morandi

Vice Principal

Gayle Grossman - Bly

Admin Assistant

Lori Ainsley

Secretary

Anna Gagliardi

Lead Caretaker

Elio Sarro

Caretakers

Pino Gravina

Brian Niessner

Ken Jackson

Emily Marino

Superintendent

Dan Wu

(905) 764-6830

Trustee

Anna DeBartolo

(416) 898-9653

School Council Co-Chairs

Michelle Qubti

Megan O'Connor



# Kleinburg P.S.

NOVEMBER 2018

Dear Families;

Welcome to November at KPS. The first two months of the year have been busy. We had a minor reorganization, then cross country, various clubs and teams starting up and the Fall Festival. A great deal going on at the school! We would like to thank our School Council and volunteers for all of their hard work in organizing the Fall Festival. The students were engaged and all had a wonderful time.

At our October school council meeting we shared the following focus areas from our School Improvement Plan:

Mathematics - Student Achievement

Mental Health - Student Well Being

Modern Learning

### Weather Changes

As November arrives please be reminded that students should be dressed accordingly for the changing weather patterns. Children will be outside and should dress for outside play.

### Links to Support Learning through Assessment, Evaluation and Reporting

The link to the Ministry of Education's website entitled "[Support your Child's Learning through Assessment, Evaluation and Reporting](#)" helps to clarify questions around the reporting process. In reporting please remember that every child is an individual who will meet goals at their own pace. Each child requires different levels of support to achieve success. Parents and teachers work together to ensure students have what they need to be successful. Please ensure that if you have any concerns about programming that you talk with your child's teacher on a regular basis. You can contact teachers by phone or send a note with your child.

Please mark the following dates in your calendar – **November 19** reports go home, **November 22** evening interviews and **November 23** morning interviews. Registration for the interviews will be accomplished using EDSBY. Please see the link in the newsletter to the EDSBY parent/guardian demo.

Happy November everyone!

*Greg Morandi*

Principal

*Gayle Grossman-Bly*

Vice Principal

## **REMEMBRANCE DAY**

*Please join us in the gym at 10:45 on Friday November 9, 2018 for our Remembrance Day assembly.*



## **EDSBY**

We will be continuing with **Edsby**, which allows online scheduling of **interviews/conferences** with your child's teachers, keeping details and information safe and secure. In order for families to access Edsby, a valid email address is required.

<http://www.edsby.com/how-edsby-helps/parent/http://www.edsby.com/how-edsby-helps/parent/>

## **ENCHANTED FOREST SCHOLASTIC BOOK FAIR**

The **Enchanted Forest Scholastic Book Fair** is coming to KPS!!! It begins on **Monday, November 19th till Monday, November 26th**. Please keep an eye out in your child's agenda for a brochure and letter in the coming weeks. Here you will see your child's browsing and buying time, as well as open buying time. There will be no preview this year, so **the date indicated on the letter is when you can send money in with your child**, if you choose. On Thursday, November 22nd the book fair will be open in the evening during Parent teacher interviews. Don't forget to pop in to take a look. If you are able to volunteer during any of the book fair dates, please contact Mrs. Castelli by Friday November 16th.

## **LET'S BE KLEINBURG KIND**

HOW CAN I TRY TO BE MORE KIND?

- Do something kind for yourself.

Do one kind thing for yourself each day which doesn't involve buying something. Congratulate yourself on your achievements!

- Do one kind thing for someone else.

Each day, try to do something kind for another person. Open the door for someone, give somebody a genuine compliment ... It doesn't matter what it is, as long as it helps somebody else!

- Resist any urges to be unkind.

If you're on the verge of being unkind to someone, stop and reflect: What are you hoping to achieve from this? And if someone is unkind to you, don't take it personally. Remember – they're probably hurting.

Sure, kindness takes courage. Especially when we're not feeling 100%. But let's fight back against unkindness and be the best versions of ourselves that we possibly can be. Be kind to everyone, always. It might not make the world go around, but it certainly makes it a lot more joyful and comfortable to live in. It sparks openness.

Catalysts creative flow. Incites union and cohesion. And, what's more, your kindness will come back to you one way or another!

## **PUNCTUALITY**

Punctuality is key in teaching self-discipline. It is important that your child be on the school grounds for soft entry at **8:20** so that they may arrive in class on time and not miss the beginning of lessons or disturb those who were on time. The instructional day begin at **8:35** with a 2-minute warning sounding at **8:33**. This 15-minute window (**8:20 to 8:35**) allows for our students to be dropped off and in the school and on time for learning. Students arriving after **8:35** are late and will need to enter the front door to get a late slip. While most students may be dismissed at the end of the day, after school time is available for remedial help, class activities and for those students who may not have completed their assignments. Please know that you will be notified if your child is to stay past the dismissal time for some reason. Any late students may be required to make up the missed time at lunch or after school. Habitual lateness will result in the



removal of privileges from extra-curricular activities, school trips and other school related activities. We ask parents to review this with their child (ren).

## **SCHOOL IMPROVEMENT PLAN**

### **MENTAL HEALTH**

#### **Restorative Approaches in York Region Schools**

At Kleinburg P.S, we have adopted [Restorative Approaches](#) as a framework to address conflicts so that in a conflict situation no one is left behind and everyone is a part of the solution. When we take the time to do this, we increase school safety, build community and create a sense of belonging.

We have a responsibility to work together to seek just and equitable solutions and to ensure the dignity of all who are involved in a conflict situation. The focus is on positive discipline, accountability, and support.

Restorative Approaches is an important part of the YRDSB commitment to building [positive climates for learning](#).

Restorative Approaches values:

- An inclusive approach to problem solving so that feelings, needs and views of everyone in a given community are taken into account
- The deliberate creation of school cultures and communities where all are encouraged not only to listen, but to have a voice and make valued contributions.
- A belief in people's ability to resolve their own problems given time, support and a chance to tell their story
- Respectful relationships
- Development of skills needed for conflict resolution

An important component of a Restorative Approach is the use of Restorative questions to help gather information, understand an incident and what needs to happen next, address the harm done, restore relationships and reflect on learning. All involved work with each other and ask:

- Who has been hurt?
- How have they been affected?
- How can all involved consider what needs to be done to "make things right" and through so doing, restore relationships?

### **ZONES OF REGULATION**

Zones of Regulation is a curriculum geared toward helping students gain skills in consciously regulating their actions, which in turn leads to increased control and problem solving abilities. Using a cognitive behavior approach, the curriculum's learning activities are designed to help students recognize when they are in different states called "zones," with each of four zones represented by a different color. In the activities, students also learn how to use strategies or tools to stay in a zone or move from one to another. Students explore calming techniques, cognitive strategies, and sensory supports so they will have a toolbox of methods to use to move between zones. To deepen students' understanding of how to self-regulate, the lessons set out to teach students these skills: how to read others' facial expressions and recognize a broader range of emotions, perspective about how others see and react to their behavior, insight into events that trigger their less regulated states, and when and how to use tools and problem solving skills.

## The ZONES of Regulation®

<b>BLUE ZONE</b>	<b>GREEN ZONE</b>	<b>YELLOW ZONE</b>	<b>RED ZONE</b>
Sad Sick Tired Bored Moving Slowly	Happy Calm Feeling Okay Focused Ready to Learn	Frustrated Worried Silly/Wiggly Excited Loss of Some Control	Mad/Angry Terrified Yelling/Hitting Elated Out of Control

### CHARACTER MATTERS

What is character development?

*"Character development is the deliberate effort to nurture the universal attributes upon which schools and communities find consensus. These attributes provide a standard for behaviour against which we hold ourselves accountable. They permeate all that happens in schools. They bind us together across the lines that often divide us in society. They form the basis of our relationships and of responsible citizenship. They are a foundation for excellence and equity in education, and for our vision of learning cultures and school communities that are respectful, safe, caring and inclusive. Excellence in education includes character development. Through character, we find common ground."*

In the month of NOVEMBER, we are focusing on COURAGE

#### ***What is courage?***

Courage involves taking the first step.

“ Courage is doing something even though you may feel afraid.

“ Courage is looking past your personal goals and dedicating your life for the betterment of others.

“ Courage is getting up to ride again after a really bad fall.

So, take the time this month to show courage and try something new!!!



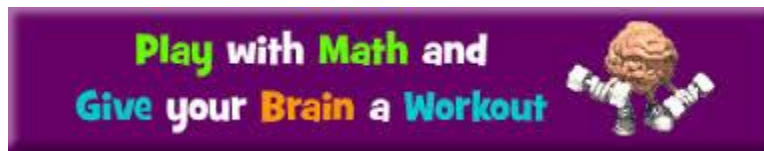
### MATHEMATICS

At KPS we are actively engaged in implementing the Comprehensive Math Program, as per the YRDSB goal of improving students' ability in mathematics.

The premise behind the *Learning* in a comprehensive math program is that students are actively engaged in the mathematics in order to construct understanding. Teachers plan, strategically sequence, and facilitate learning experiences in response to students' strengths, needs and challenges. Students engage in various mathematical processes to construct, reinforce, apply or practice their understanding of math. Students are encouraged to talk with peers, ask questions, make connections, select tools and computational strategies, represent their thinking, reason and prove, think critically, and reflect on their problem solving strategies. All learning experiences should:

- be linked to curriculum expectations
- build confidence and a positive disposition towards mathematics
- develop communication skills

- offer opportunity to learn independently and/or collaboratively in small groups or whole group
- give students an opportunity to explore mathematics in a variety of contexts



Meaningful problems:

- allow multiple entry points
- develop mathematical ideas, strategies and models
- have contexts that invite curiosity
- encourage students to see mathematics in the world around them
- provide challenge and have no immediate solution
- support students in finding their own solution and examine different approaches to the problem

### Supporting Math Learning At Home

There is access to a wealth of information on the internet in supporting math learning at home. The following are some links that will provide ideas and supports for parents.

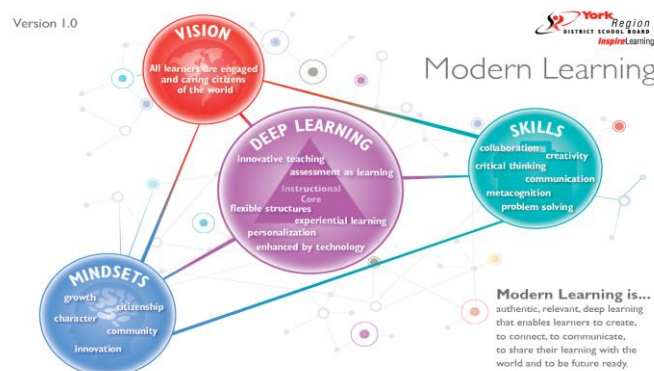
SELECT RESOURCES TO HELP YOUR CHILD SUCCEED IN MATH:

- Doing Mathematics with Your Child: Kindergarten to Grade 6  
<http://www.edu.gov.on.ca/eng/literacynumeracy/parentGuideNum.html>
- Homework Help: free online math supports  
<http://www.edu.gov.on.ca/elearning/homework.html>
- Mathies: resources for parents and students  
<http://www.mathies.ca/>
- Inspiring Your Child to Learn and Love Math  
[http://www.ontariodirectors.ca/parent\\_engagement-math/en/index.htm](http://www.ontariodirectors.ca/parent_engagement-math/en/index.htm)

### MODERN LEARNING

What is Modern Learning?

Modern Learning is authentic, relevant, deep learning that enables learners to create, to connect, to communicate, to share their learning with the world and to be future ready.

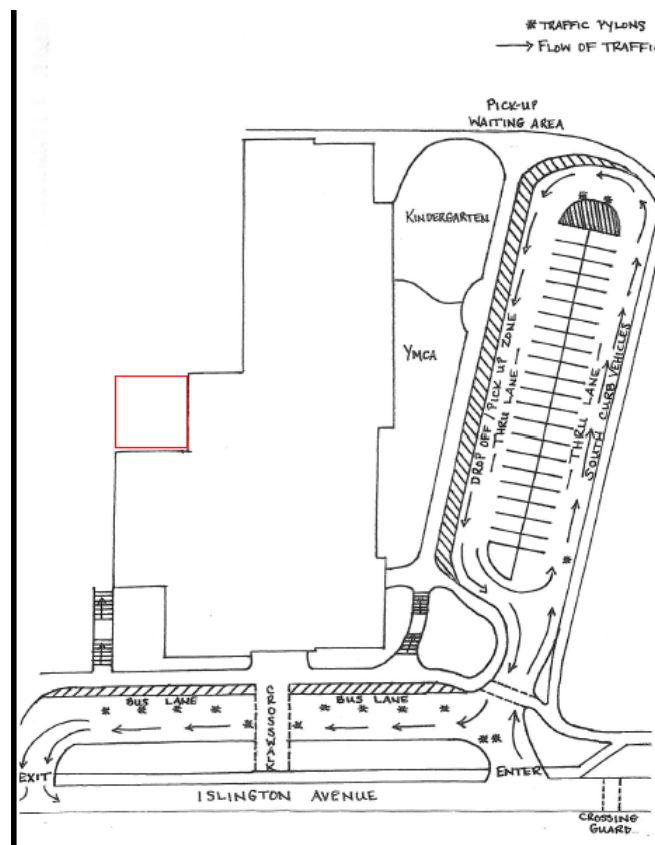


## PARKING LOT

We continue to struggle with our parking lot particularly at dismissal time. We are asking all parents/guardians to make every attempt to park close by and walk to school to pick up your child/children. We have many parents/guardians parked, blocking the drive through lane. We respectfully ask that you **DO NOT BLOCK/PARK IN THE DRIVE THROUGH LANE.** If you need to park your car to enter the school or wait for your child/children please use any available spaces along the curb, any empty parking spaces or utilize curb parking along Islington Avenue in front of the school. If not available, we ask that you follow these guidelines:

- *Park on the street or somewhere close and walk to our yard to meet your child/children at their respective door or designated spot (parking is now also available along Islington Avenue in front of the school)*
- *Continue moving through the drive through lane, not stopping and waiting and travel out of the parking lot and re - enter when a spot becomes available.*

**Under no circumstances are drivers permitted to leave their vehicles if they are not parked along the curb.** Drivers may park all along the perimeter of our parking lot taking careful note to not block the entrance or exit of the parking lot or permitted to stop their vehicle in the drive-through lane to let students exit the vehicle as this is extremely dangerous as drivers are not expecting students to run out from this lane. Please share this information with any guardian, grandparent or relative that drops off/picks up at the school. We as a community need to help this situation. For student safety if the situation does not improve during the busy pick up time, we will be controlling all vehicle entry to the parking lot between 2:30 and 3:05 by closing the parking lot and not allowing any cars to enter/exit (if already parked). Please help us by following the drop off and pick up guidelines. Please also see the map below to help with any questions you may have.



### KEEPING YOU CONNECTED AT KPS

- ✓ ***Please consult our school calendar at the following web address for upcoming school events:***
  - ✓ <http://www.yrdsb.ca/schools/kleinburg.ps/NewsEvents/Pages/School-Calendar.aspx>
    - ✓
  - ✓ As well please reference the following links for other information items:
    - ✓ The KPS blog- <https://kleinburgps.wordpress.com/>
    - ✓ The KPS twitter account - @KPS\_Coyotes
- ✓ Our school website - <http://www.yrdsb.ca/schools/kleinburg.ps/Pages/default.aspx>
  - ✓ Our front signage
  - ✓ [Our monthly newsletter](http://www.yrdsb.ca/schools/kleinburg.ps/NewsEvents/Pages/Newsletters.aspx)  
<http://www.yrdsb.ca/schools/kleinburg.ps/NewsEvents/Pages/Newsletters.aspx>
  - ✓ Front Entrance Digital Signage
  - ✓ Mid-month KPS Update
  - ✓ KPS Principal Twitter account - @morandi\_greg
  - ✓ Parent/Guardian e mail

Please continue to access these links for school information.



## NOVEMBER SCHOOL COUNCIL CORNER

### Frozen Yogurt

Frozen Yogurt delivery has begun. It is not too late to order! Yogurt is still available on School Cash Online.



NEXT MEETING:  
NOVEMBER 29, 2018  
7:00pm  
SCHOOL LIBRARY



### MARK YOUR CALENDARS!

***KPS: ONE GREAT SCHOOL, ONE GREAT PARTY***

**Thursday February 7, 2019**

**7:30 pm**

**Villaggio Ristorante**

Please join us for an evening full of food, drink and entertainment. Enjoy a night out all while giving back to 'Our Great School' through an auction and raffles.

### FALL FESTIVAL

Thank you to all the volunteers who helped make the fall festival a success.

Thank you to all the families who donated to our special event.